

BRAM STOKER'S

Dracula™

INSTRUCTION BOOKLET



Sony Imagesoft, 2100 Colorado Avenue, Third Floor, Santa Monica CA 90404

PRINTED IN JAPAN

EmuMovies



WARNING:
PLEASE READ THE ENCLOSED CONSUMER INFORMATION AND
PRECAUTIONS BOOKLET CAREFULLY BEFORE USING YOUR
NINTENDO® HARDWARE SYSTEM OR GAME PAK.

Sony Imagesoft Inc.,
2100 Colorado Avenue,
Santa Monica, CA 90404

For questions or comments about this or
other Sony Imagesoft products,
call (310) 449-2393.



THIS OFFICIAL SEAL IS YOUR
ASSURANCE THAT NINTENDO HAS
APPROVED THE QUALITY OF THIS
PRODUCT. ALWAYS LOOK FOR THIS
SEAL WHEN BUYING GAMES AND
ACCESSORIES TO ENSURE COMPLETE
COMPATIBILITY WITH YOUR
NINTENDO ENTERTAINMENT SYSTEM.
ALL NINTENDO PRODUCTS ARE LICENSED
BY SALE FOR USE ONLY WITH OTHER
AUTHORIZED PRODUCTS BEARING THE
OFFICIAL NINTENDO SEAL OF QUALITY.

LICENSED BY

Nintendo

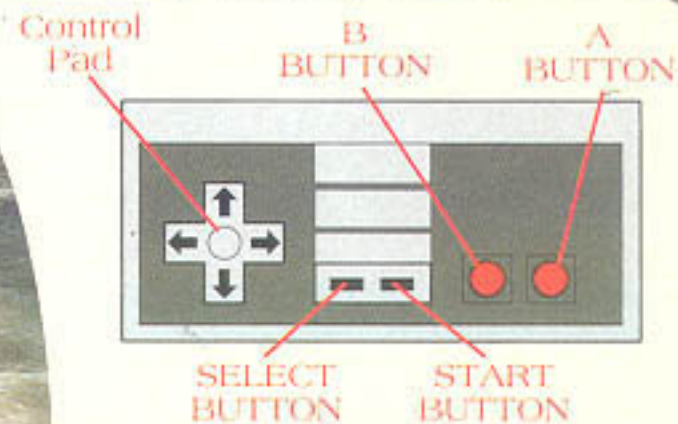
NINTENDO AND NINTENDO
ENTERTAINMENT SYSTEM ARE
REGISTERED TRADEMARKS OF
NINTENDO OF AMERICA INC.

CONTENTS

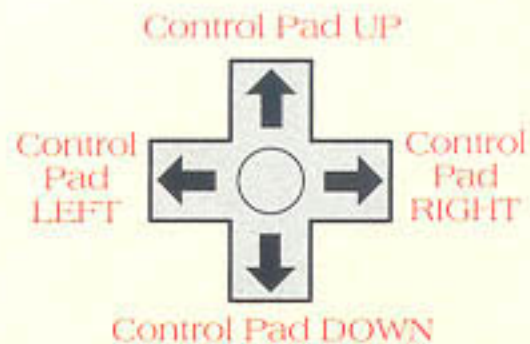
Introduction	2
Names of Controller Parts	3
Starting Up	4
Controlling Harker	5
Main Game Menu	6
Main Game Screen	7
Pick Ups	9
Scenes	13

In the black of night he stalks his unwitting victims with the passion of a prince and the grace of a wild animal. Able to assume the guise of everything from a shadow on the wall to a jagged-toothed Wolf Beast, he feeds on the living, sinking his pearly fangs into their fair necks for a drink of their life-giving serum. For he is the Prince of Darkness—Count Dracula—and he's cast his hypnotic spell on your lovely mistress, Mina Murray. Now you, Jonathan Harker, must drive a stake through the heart of this vampire and save the fair Mina from eternal life as a vampiress.

NAMES OF CONTROLLER PARTS



This manual refers to the following directions:



STARTING UP

Make sure your Nintendo Entertainment System is turned off. Put the Game Pak into the system and press the POWER BUTTON on the front of your Nintendo machine. After the game introduction, press the START BUTTON at the Bram Stoker's Dracula title screen.

4

CONTROLLING WALKER

TO WALK RIGHT OR LEFT:
Press the Control Pad RIGHT or LEFT.

TO CROUCH OR LOOK DOWN:
Press the Control Pad DOWN.

TO LOOK UP:
Press the Directional Pad UP.

TO USE A WEAPON:
Press the B Button.

STANDING JUMP:
Press the A Button.


LONG JUMP:
Press the A Button while walking.

TO PAUSE GAME AND VIEW SCORE:
Press the Start Button.

JUMPING SMASH:
Press the A Button and Directional Pad Down to fall through a ledge.

5

MAIN GAME MENU



> START GAME
DIFFICULTY MEDIUM
MUSIC TEST 00
SOUND TEST 00
CONTROL PAD ... JUMP B
ATTACK B

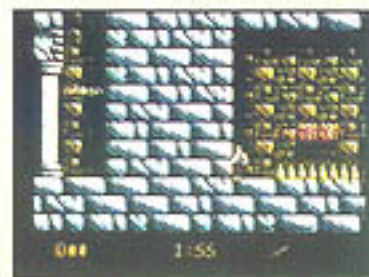
From this screen, Press the Start Button to reach the Main Game Menu.

From the Main Game Menu you can adjust the skill level, sample various music tracks and sound effects in the game, and program the Control Pad settings.

To make selections within the Main Game Menu choose your option, Press Select and then Press Start.

6

MAIN GAME SCREEN



1 3 2 4

SCORE

Your score is calculated at the end of each level. The more diamonds and coins you pick up, the higher your score.

LIVES

This shows how many lives you currently have. You begin each game with four lives.

7



S

2. TIME

This displays how much time you have remaining to complete the level.

3. ENERGY BARS

One and a half energy bars equal one life. All it takes to lose an energy bar is one blow from an enemy.

4. WEAPON

This indicates the weapon with which you are currently armed.

8

PICK UPS



There are many Pick Ups in the game—each with its own special function. To collect a Pick Up, you must break the Pick-Up Box and jump to catch it. The following is a list of the various Pick Ups in the game.

Gold Coin of Transylvania:

These are worth 1,000 bonus points.

Diamond of Transylvania:

These are worth 10,000 bonus points.



9



U

**1 UP:**

These are worth an Extra Life (one and a half energy bars per life)

Continue Credit:

These are worth three lives.

Energy Booster:

These replenish your energy by one bar.

Triple Energy Booster:

These replenish your energy by three bars.

**Super Energy Booster:**

These replenish your energy with six bars.

Invincibility:

These award you with 10 seconds of invincibility.

Clock Token:

These add 20 extra seconds to the Timer.



WEAPON PICK UPS

Rock:

Rocks are perfect for taking down enemies from far away.

Axe:

The Axe spins when thrown, making it perfect for cutting down all types of enemies.

Torch:

The torch is great for burning enemies at close range, and from far away. Each time the torch hits the ground, it will burst into flames—destroying all enemies within range.

Triple Rock:

The triple rock is the ultimate weapon. When launched, the Triple Rock splits into three smaller rocks, striking your enemy from his head to his heels.

12

SCENES

In order to advance from level to level, you must destroy all kinds of enemies and get past Dracula. Beware! Dracula can assume the form of everything from a bat to a shadow on the wall. The following is a brief description of what you'll face in each level.

A JOURNEY THROUGH TRANSYLVANIA

Make your way through the woods in Dracula's home town and take on the Prince of Darkness in his shadow form. But first, you've got to get past nail beds, bats, red baths, floating platforms and bony skeletons.



13

TRAPPED IN CASTLE DRACULA



Dracula's Castle is loaded with sharp spike pits and sure-shot henchmen. And beware of the young Prince Dracula—avoid staring into his eyes or you will forever be held under his hypnotizing spell.

ESCAPE FROM CASTLE DRACULA

There's only one way out, but first you've got to down more sure-shot henchmen and neck-biting bats, as well as cross collapsing platforms, nail beds and fire- water channels that'll boil you in seconds flat.

And then you must defeat Dracula in his Wolf Beast form.

Beware—the wolven prince will be surrounded by his flame-belching wolf guardians.



THE HILLINGHAM ESTATE MANSION

This mansion is infested with all kinds of evil vermin. You must defeat machete-wielding henchmen and flame-belching wolves, cross sharp spike gardens—and escape the young Dracula.

Approach with caution as he won't hesitate to unleash his venomous bats your way.



THE CARFAX ABBEY CRYPT

Welcome to Dracula's London residence—the one he purchased to be closer to your Mina. Watch out for more ghosts, giant hands, flame-throwing eyeballs, hopping tarantulas and scorching fire water, then get ready to fend off Dracula in his bat form.



BACK IN TRANSYLVANIA

Welcome to the land of the unliving, and Dracula in his shadow form. This place is filled with all kinds of weird things including ghosts, skeletons, henchmen, freezing rivers, floating platforms and zombies.

RETURN TO DRACULA'S CASTLE

Get ready to bring down Dracula once and for all, with a little help from your old friend Dr. Van Helsing. But watch out! Dracula's castle is loaded with nail beds, bats, and hidden passages. You may even run into Dracula in his evil robe form.



Sony Imagesoft Inc. warrants to the original purchaser of this Sony Imagesoft product that this Game Pak is free from defects in material and workmanship for a period of ninety (90) days from the date of purchase. This Sony Imagesoft product is sold "as is," without expressed or implied warranty of any kind, and Sony Imagesoft is not liable for any losses or damages of any kind resulting from the use of this product. Sony Imagesoft agrees for a period of ninety (90) days to either repair or replace, at its option, free of charge, the Sony Imagesoft product. Send product postage paid, along with dated proof of purchase, to the address shown below.

This warranty shall not be applicable and shall be void if the defect in the Sony Imagesoft product has arisen through abuse, unreasonable use, mistreatment or neglect. THIS WARRANTY IS IN LIEU OF ALL OTHER WARRANTIES AND NO OTHER REPRESENTATIONS OR CLAIMS OF ANY NATURE SHALL BE BINDING ON OR OBLIGATE SONY IMAGESOFT. ANY IMPLIED WARRANTIES APPLICABLE TO THIS SOFTWARE PRODUCT, INCLUDING WARRANTIES OF MERCHANTABILITY AND FITNESS FOR A PARTICULAR PURPOSE, ARE LIMITED TO THE NINETY (90) DAY PERIOD DESCRIBED ABOVE. IN NO EVENT WILL SONY IMAGESOFT BE LIABLE FOR INCIDENTAL OR CONSEQUENTIAL DAMAGES RESULTING FROM POSSESSION, USE OR MALFUNCTION OF THE SONY IMAGESOFT SOFTWARE PRODUCT.

Some states do not allow limitations as to how long an implied warranty lasts and/or exclusions or limitations of consequential damages, so the above limitations and/or exclusions of liability may not apply to you. This warranty gives you specific legal rights, and you may also have other rights which vary from state to state.

Sony Imagesoft Inc.
2100 Colorado Avenue
Santa Monica, CA 90404
(310) 449-2303